

Locations and activities for potential tourism developments in the wetlands of the provinces of Battambang and Siem Reap of the Tonle Sap Lake

<http://www.citypopulation.de/en/cambodia/admin/>

Survey have made from 19th August to 12th September 2022, during the middle of south-east monsoon season. The rain was mostly, everyday in the afternoon, 1-2 hours it frequently short rained in the morning, the middle of the day, the evening, and overnight. One time it didn't rain at all for three days, while at other times it rained relentlessly for two days.

Daytime temperatures exceed 32°C with nighttime lows near 26°C. Level of water is 82% of highest.

Increasing of delta wetlands of lake around 30 km.



Indochinaviptour.com



Indochinaviptour.com

Tonlesap lake and wetlands. Siemreap and Battambang

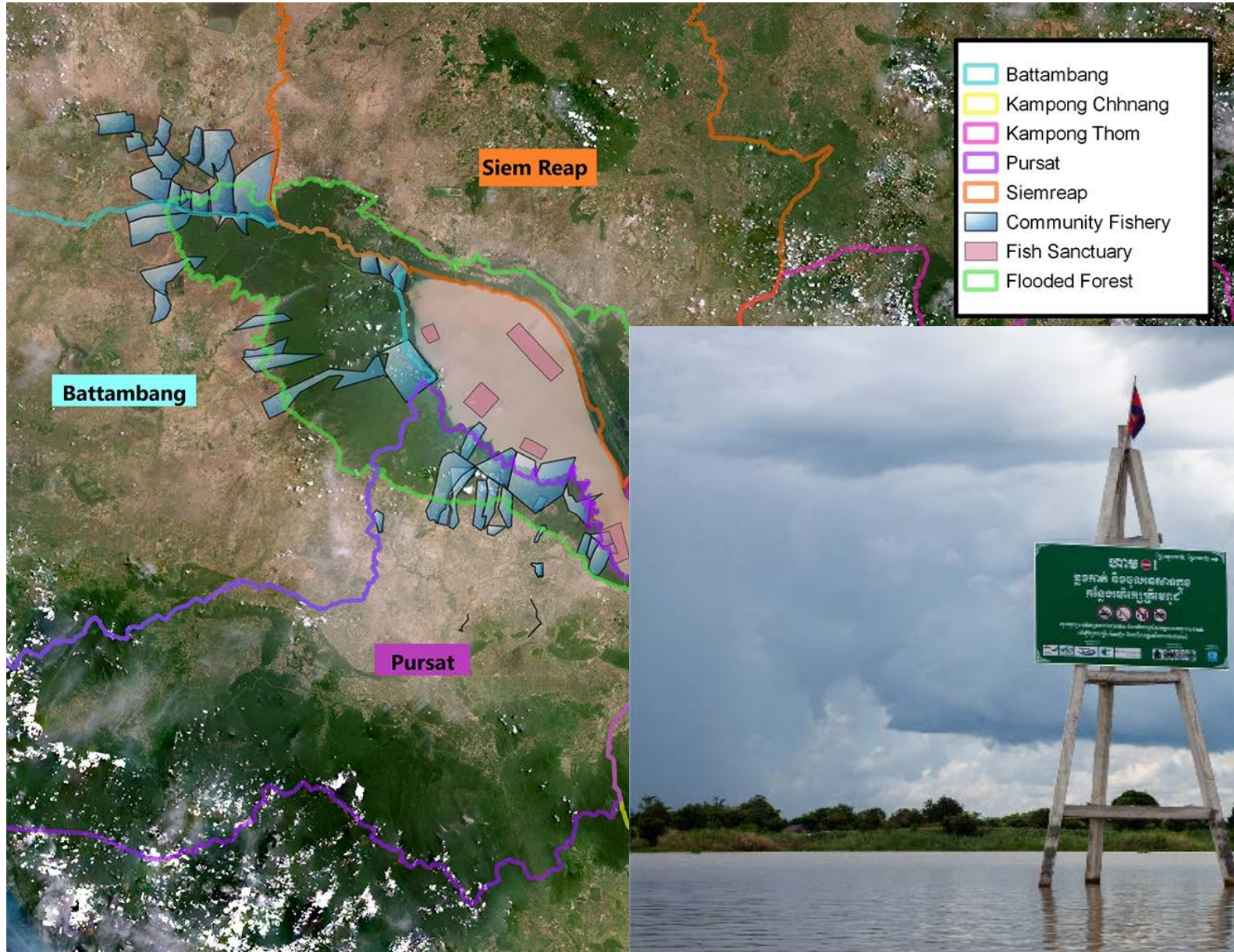
Name of explored sites:

1. Prey Chas Village (Serei Sophorn river, Battambang Province), include Bakprea village.
2. Preak Toal village (Sreng River, Battambang Province), include Tchwang district, Kampong Prahok village.
3. Prey Toal. Kbal Krobay. Bird sanctuary.
4. Mey Chrey village
5. Meat Kla village and nature and wildlife area
6. Kampong Pluk village
7. Kampong Kleang village
8. Chong Kneas village, include Prey Ksat flooded forest and Boeng Chhmar area.

Name of suggested boat tourist routes for the period of beginning of July to the middle of February:

1. Battambang – Bakprea - Prey Chas village (one day or 2 days, one night)
2. Siemreap – Mey Chrey village (one day)
3. Siemreap – Mey Chrey village – Preak Toal village- Prey Toal bird sanctuary (2 days, one night or more days)
4. Siemreap – Chong Kneas village - Preak Toal village – Prey Toal bird sanctuary (one day)
5. Siemreap – Chong Kneas village (one day)
6. Siemreap – Chong Kneas village – Kbal Krabay - Preak Toal village- Prey Toal bird sanctuary (one day or 2 days one night)
7. Siemreap – Kampong Pluk village (one day)
8. Siemreap – Kampong Kleang village (one day)
9. Siemreap – Kampong Kleang village – Meat Kla village (2 days, one night or more days)
10. Siemreap – Kampong Kleang village – Kampong Pluk village (one day)

Tonle Sap Lake boundaries, fish sanctuaries and community fisheries. Image by Planet, Open Development Cambodia. Tonle Sap is home to eight fish sanctuaries spanning some 235.4 km² (91 mi²), known locally as “conservation areas.”



Sign of conservation area

Scenery landscape and natural attractions of Tonlesap lake:



Sunset at the open water
(Kampong Pluk)



Large migratory birds (Nov, Dec, Jan)
(Prek Toal, Meat Kla)



Water hyacinth fields (Jun-Dec)
(Meat Kla, Kampong Kleang)



Open water (Oct-Feb)
(Kampong Pluk, Kampong Kleang)



Trampyang (flooded bushes)
(Mey Chrey, Prek Toal)



Flooded largest forest (Aug-Jan)
(Kampong Pluk, Chong Kneas)

Cultural attractions of Tonlesap villages:



Crocodile and snake farms
(Kampong Pluk, Kampong Kleang)



Water people life (Kampong Pluk, River tribes villages (Prey Chas, Bakprea)
Prey Chas)



Handicraft (Preak Toal)



Stilts villages (Kampong Pluk,
Kampong Kleang)



Floating villages (Mechrey Preak Toal,
Meat Kla)

Tourist suggested activity:



Flooded forest kayaking and paddle boarding (Aug-Feb)



Boat riding and travelling (Aug-Jan)



Flooded forest sunset tour (Aug-Feb)



Boat night camp



Fishing



Birdwatching (Now-Jan)

Existing homestay observation:



Existing local transport offers observation:



Transportation boat. Medium for 10-12 people
big for 20-40 people. Can travel to any areas of
Tonlesap, including open water. Speed 15 km per hour

Speed boat. 10 people max. Can travel to any areas of
Tonlesap, including open water. Speed 25 km per hour

Local kayak. 2 people max
Can travel to flooded bushes and forest areas
Can not go to open water

Small speed boat. 6 people max
Can not go to open water. Speed 25 km per hour



1. Prey Chas rural commune (Battambang province)
13.3139, 103.40264. (population 50000 people)

The commune Prey Chas, is located in the Aek Phnom district of Battambang Province, 30km away from Siem Reap and 27 km from Battambang. Located on the edge of the Tonle Sap Lake. There are **Prey Chas village, Bak Prea village, Kaoh Chiveang village, Kampong Prahok village, Anlong Sandan village, Peam Seima village.**



Phum Prey Chas Floating Villages, Battambang will cast you away into a surreal world. The rural communities in Battambang which are settled on the shores of Serei Sophorn River and Sreng river is a hidden natural treasure to the tourists.

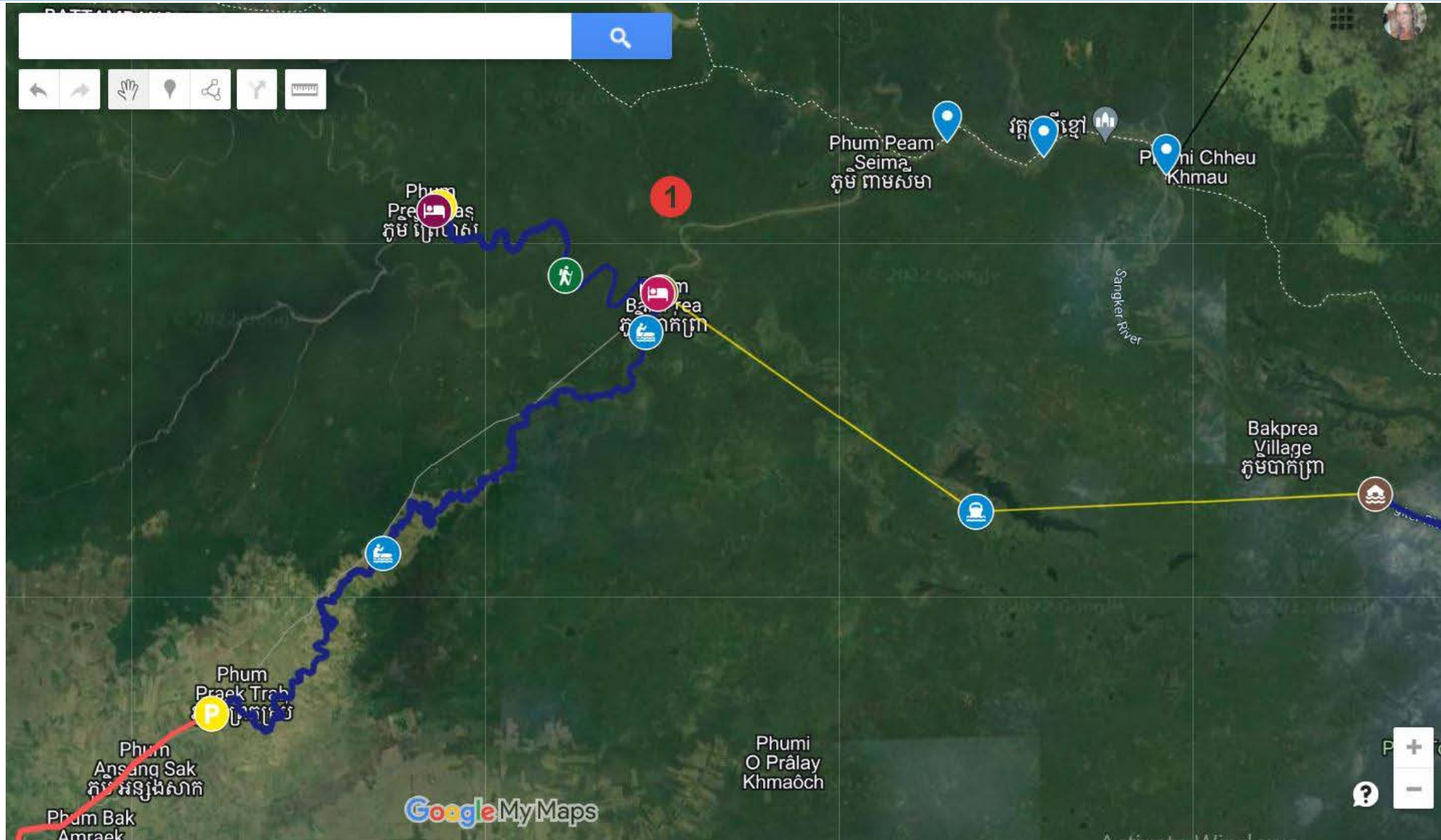
Burmese and thai style pagodas and houses, with the walls made from water hyacinthe you will not see anywhere in Cambodia. This is the most authentic tour. Elegant banyan trees define river bends; the banks gradually diminish, until dry land sits mere inches above the water's surface. Houses on stilts give way to tents that local citizens pitch along the river and relocate as water levels change. Some houseboats are attached to fantastic bamboo fishing derricks that lower giant nets into the shallows.

The best cultural attractions are Prey Chas village (500 families), Kampong Prahok (30 families), Bak Prea village (1000 families) and Wat Cheu Khmau at Chiveang village



Route from Battambang: 30 min by car, 5 hours by boat

Map and Geolocation



Car road from Battambang (Aek Phnum only in dry season)

ទំនប់ សាលាកាអន, 46RC+46, Krong Batta

Баттамбанг

Aek Phnum

Добавить пункт назначения

Параметры

Отправить маршрут на телефон

через 156 **41 мин.**
Без пробок: 41 мин. 17,9 км

По шагам

к Phnum: популярные места

Ek Phnom Pagoda
Индустский храм

Phum Chong Prek
ភូមិ ចុងព្រែក

Phum Dam Spey
ភូមិ ដំរីស្នែ

Wat Samrong Knong
ព្រះវិហារសំរុងក្បែង
Буддийский храм

Phum Sla Kaet
ភូមិ ស្លាកែត

The Sanctuary
Villa Battambang

Battambang
Central Market
ទីផ្សារកណ្តាល

Phum Rumcheck3
ភូមិ រំចេក៣

Phum Ochar
ភូមិ អូចារ

Khmer Prahok Market
ទីផ្សារប្រហុកខ្មែរ

ទំនប់ សាលាកាអន

Aek Phnum

Та Пон Pagoda
Буддийск

Слой

Аэропорт

Google

Activator Wind

Car road from Siemreap (only in dry season)

Сиемреап

Перетащите путевую точку

Phum Prey Chas

Добавить пункт назначения

Отправление сейчас ▾ [Параметры](#)

[Отправить маршрут на телефон](#)

через ផ្លូវជាតិលេខ ៦/NR6 **2 ч 34 мин.**
Самый быстрый маршрут с учетом пробок 94,9 км

[По шагам](#)

Phum Prey Chas: популярные места

Слой

2 ч 34 мин
94,9 км

Сиемреап

Паттамбонг

Nature attractions scenery viewpoints and routes	River banks, flooded bushes and flooded forest
Cultural attractions	Authentic floating and stilt villages life. Burmese style monastery. This monastery was built in 1887, and Wat Chheu Khmao's temple was made of purely Chheu Khmao tree. Wat Chheu Khmao was built on a hill, which in the past was rich of Chheu Khmao trees, and was cut off to make the temple that why it was named Wat Chheu Khmao. In the past, the hill was a magical hill in the middle of flooded forest of Lonle Sap
Biodiversity of plants	Poor. Eichhornia crassipes (water hyacinth), mimosa pigra (giant mimosa)
Biodiversity of animals	Poor. Water herons black and white, gray eagle, pheasant, migratory birds (November to January). Freshwater turtles, tortoises Fishing cat and leopard cat, otter are rare.
Biodiversity of fish and mollusks	Tilapia, bighead carp, common carp, golden apple snail
Potential outdoor activity	Fishing, handicrafts, birdwatching, kayaking
Existing homestay\lodge\camping	1. Homestay at Bakprea village (16 people 0978550782 Kao Sovannarith 2. Homestay at Prey Chas village (20 people dormitory and 5 double rooms) 012245615 Sinh
Existing restaurants	None. Only shops.
House\land for rent, price, contacts	Average price 100\$ for one month. Land is negotiable
Local commune tourist information and support	Don't have.
Contacts	Ek Phnom district chief name Li Komsream 0979910966
Any previous tourism development projects	The eco-tours of floating villages in Battambang https://the-floating-village.business.site/
Any NGO, English speaking development projects	Prey Chas Boarding houses (Childs dream foundation) Sreylin Chum 017311382 sreylin@childsdream.org
Transportation	Feb-Aug: Medium transportation boat 10-12 people Aug-Jan: Big transportation boat (30 people)
Road network, traveling distances;	1) August -January: Good asphalt road from Battambang to Phum Doun Mea (14 km), red dirt road 7 km to Proek Trab. Road N156. Boat transportation 5 hours among Sreisophon river 2) February-July: Good asphalt road from Battambang to Phum Doun Mea (14 km), red dirt road 39 km to Phum Bakprea. The road N156. Boat transportation 1 hour among Sreisophon river
Boat transportation local price	80\$ per day (8-10 people). 20\$ per pax one way to Prey Chas
Opportunity for investors	The eco-tours of floating villages in Battambang. 1. One-day observation tour 2. 2-days home-stay tour 3. Birdwatching eco-stay 2-days tour(Nov-Jan) 4. Adventure transfer Battambang-Siemreap (12 hours rain season, 8 hours dry season)



Sreisophon river



Homestay Bakprea village



Commercial fishing



Sreng river



Fishing traps Bak Prea village



Wetlands around Prey Chas village

Name and description



PREK TOAL AREA

2. Prek Toal rural commune (Battambang province)

Prek Toal village (population 8000 people)

Prey Toal Bird sanctuary. Prek Toal core natural reserve

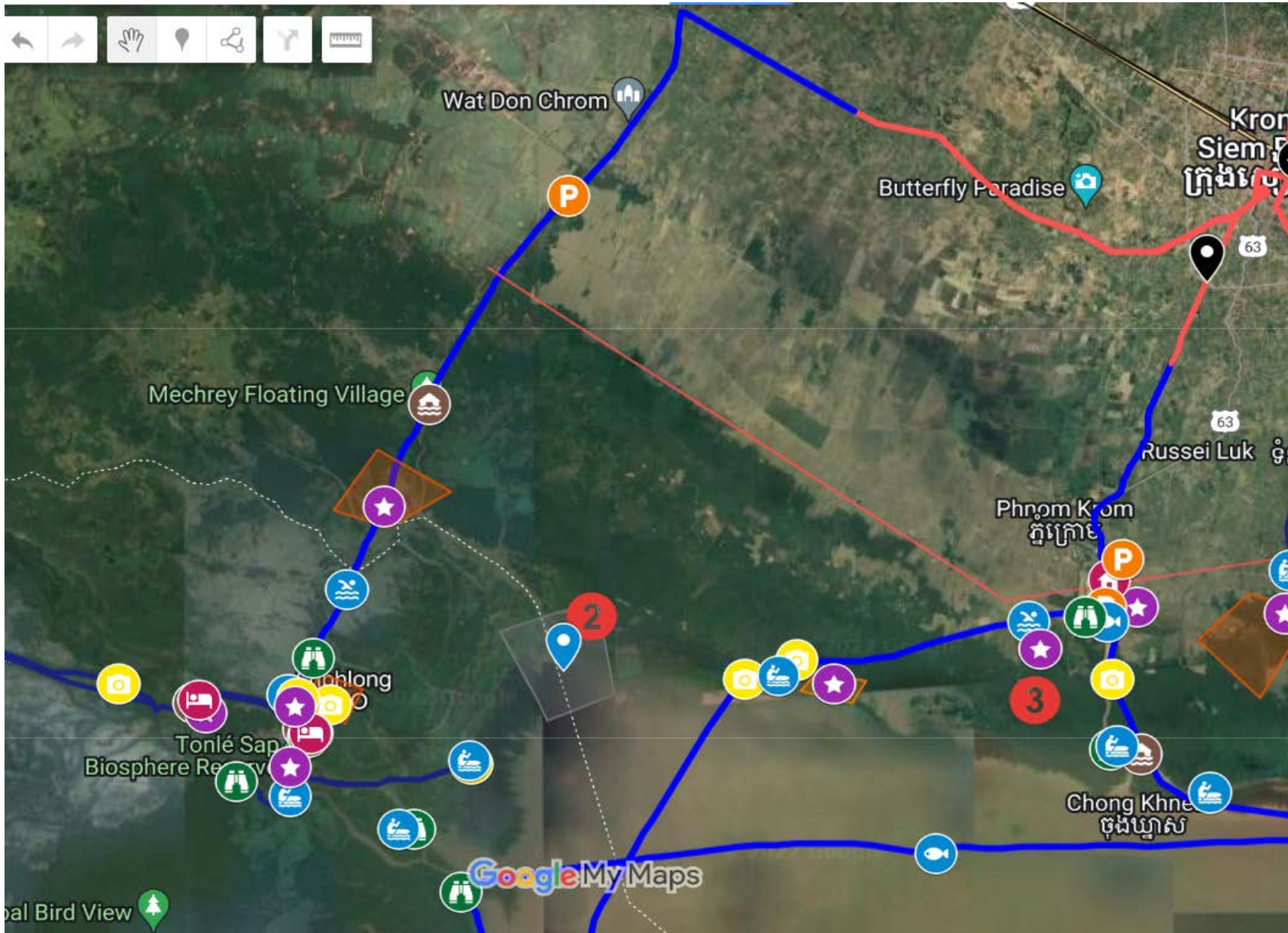
Prek Toal bird sanctuary is the largest waterbird colony in South-East Asia. Located at the edge of Tonle Sap Great Lake, this stunning Ramsar site is part of the UNESCO Biosphere Reserve. It is covered mostly by freshwater swamp forest which floods annually from August to the end of December to depths of up to 8 m. Prek Toal is home to the rare waterbirds, in the dry season from November to the end of January. Within Tonle Sap's great expanse, there are three separate ecological spheres. Prek Toal, with its 31,280 hectares of lowlands and swamps, is the ideal shelter for a variety of birds and it's also the most accessible from Siem Reap.

You can see there the various key birds especially the **Spot-billed Pelican, Milky Stork, Painted Stork, Lesser Adjutant, Greater Adjutant, Black-headed Ibis, Oriental Darter, Grey-headed Fish Eagle**, as well as three kinds of **Cormorant**. Over 150 bird species have been recorded in this protected reserve.

Can do 2 types of the boat trip from Siemreap

1. Drive car to Chong Kneas pier (Siem Reap Pier) (30 min). Get the boat acrossing the Tonle Sap Great Lake and through the shrub of flooded forest (Kbal Krobay), inside the protected area (1 hour). Get to see great open water area and enjoy the sunset when you will come back.
2. Drive car to MeyChrey village (30 min). Through Mey Chrey village and freshwater swamps and bushes (2 hours). Get to see how Cambodian locals live at a real floating village.

Map and Geolocation



Road to Prek Toal (via Mechrey village)

Сиемреап

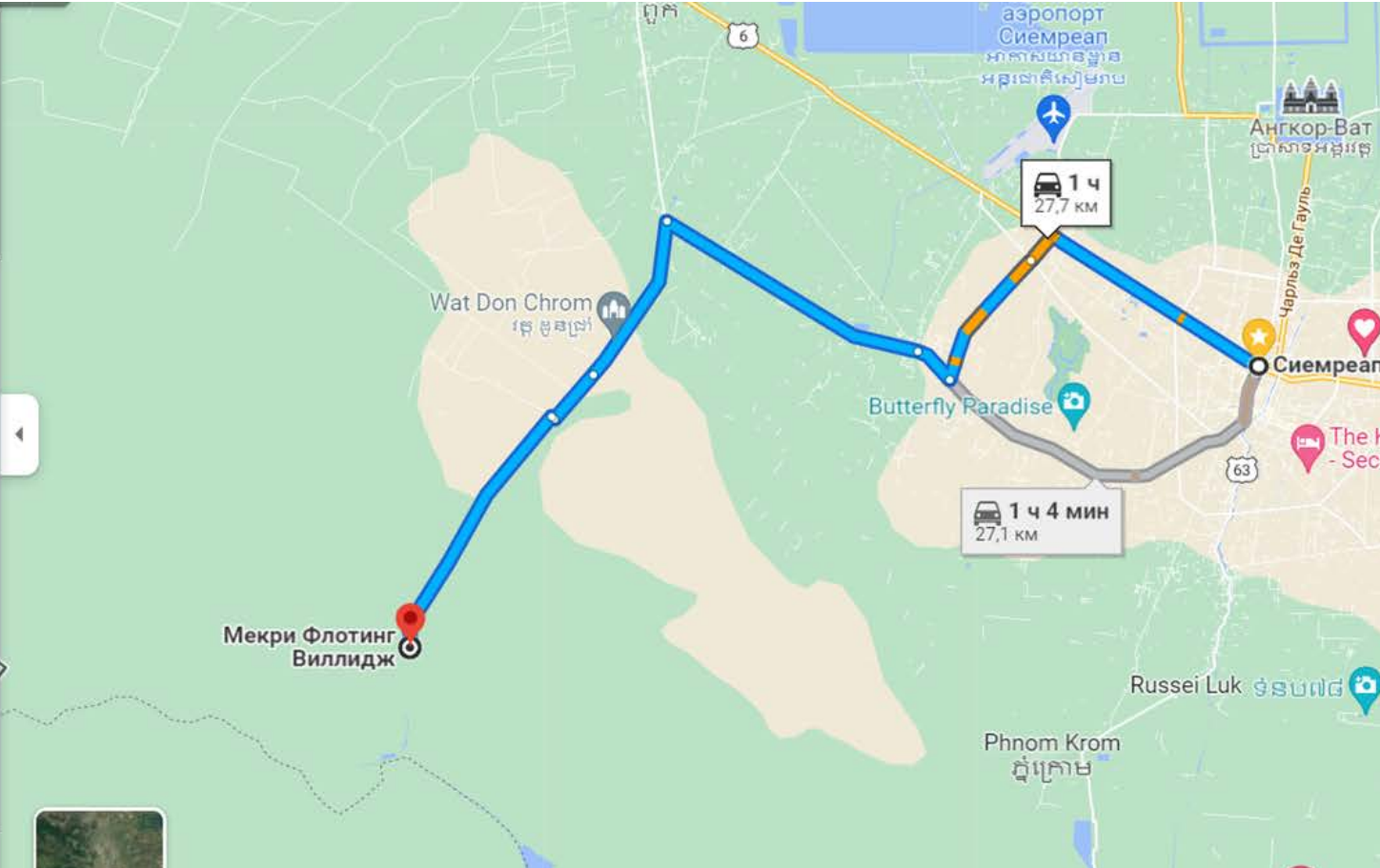
Мекри Флотинг Виллидж, 8M5M+2H5, I

Добавить пункт назначения

Отправление сейчас ▾ [Параметры](#)

[Отправить маршрут на телефон](#)

через ផ្លូវជាតិលេខ ៦/NR6	1 ч
Самый быстрый маршрут с учетом пробок	27,7 км
По шагам	
через Sivutha Blvd/NR63	1 ч 4 мин.
	27,1 км



Nature attractions scenery viewpoints and routes	Prek Toal core bird Reserve. Prey Toal (Kbal Krobay) bird sanctuary
Cultural attractions	Authentic floating village Prek Toal. Water hyacinth handicrafts.
Biodiversity of plants	Prek Toal freshwater swamps. Flooded forest. Eichhornia crassipes (water hyacinth), mimosa pigra (giant mimosa)
Biodiversity of animals	https://www.birdguideasso.org/prek-toal-bird-checklist/
Biodiversity of fish and mollusks	https://www.fao.org/3/AB561E/ab561e07.htm
Potential outdoor activity	Birdwatching, eco-stay, boat adventures (kayaking, paddle boarding). Period – November – the end of January.
Existing homestay\lodge\camping	Many opportunities of homestay in floating wooden houses of Prek Toal village. 5 USD per person\night. You should bring your own hamok or tent and sleeping bag
Existing restaurants	None. Only shops. Before it was the restaurant of Saray tonle community (restaurant and handicraft shop) – now doesn't work because of COVID
House\land for rent, price, contacts	Average price of house rent (50mx30m) 100-150\$ for one month. 1000\$ per 1 year. Land is free behind the house. There are the opportunity to buy (rent) land at the border of wildlife sanctuary. Many of the owner are ready to provide the houses or land for rent. Need to make notice to the chief of Prek Toal commune. Khum Chang 099302927 (Battambang).
Local commune tourist information and support	Prek Toal Environmental Office (6 guides, 4 boat drivers, 4 rangers) Before Covid office has 40 employees Foreigner entrance ticket 10\$. The small boat (10 people) to Prey toal bird sanctuary 40\$ 2-3 hour of birdwatching excursion
Contacts	Chief Chumnet 017539996
Any previous tourism development projects	1. Cambodia Bird Guide association 2. Prek Toal Tours&Travel. Prek Toal village 077797112, booking@prektoal-tours.com 3. Sam Veasna bird conservation tours. https://samveasna.com/ +855-92-554473
Any NGO, English speaking development projects	https://osmosetonlesap.net/wp/index.php/en/saray-tonle-community/ Saray Tonle community
Transportation	Feb-Aug: Medium transportation boat 10-12 people Aug-Jan: Big transportation boat (30 people)
Road network, traveling distances;	1) Good asphalt road from Siemreap to Chong Kneas pier (9 km) 2) Good asphalt road from Siemreap to Meychrey commune (13 km)
Boat transportation local price	1. Boat from Meychrey village to Prek Toal village 40\$ per day (8-10 people). 60\$ day (30 people) (2 hours) 2. Boat from Chong Kneas village to Prek Toal 120\$ per day (8-10 people). 160\$ day (30 people) (1 hour)
Opportunity for investors	1. One-day birdwatching tour 2. 2-days home-stay birdwatching tour (Nov-Jan) 3. 2 days eco-stay birdwatching tour (Nov-Jan) 4. Eco-stay lodge construction (min 40 guests) 5. Kayaking station rental SUP and kayaks



Prek Toal



Milk Storks



Kayaking tour from Siemreap at 2015



Bushes of Kbal krobay



Birdwatching tower



Birdwatching area



Freshwater turtles farm



Prek Toal Enviromental office



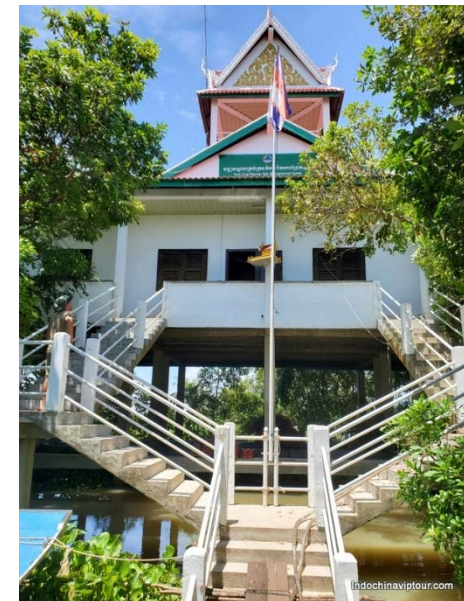
Crocodile farm



Ranger



Fish processing



Prek Toal Enviromental office

Houses for rent at Prek Toal



Name and description

MECHRAY



3. Mechrey rural commune (Siemreap province) (population 2000 people)

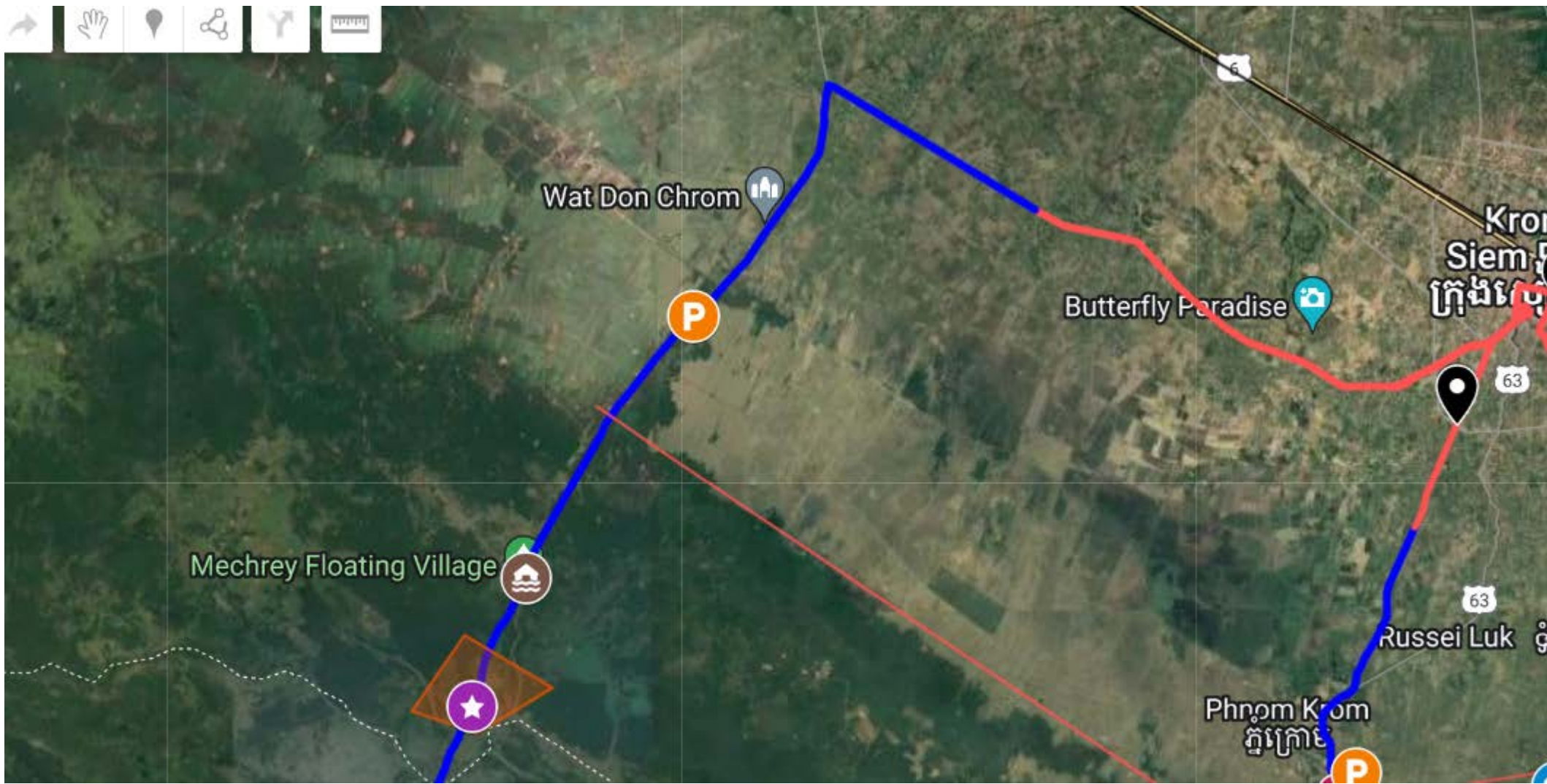
Mechrey Floating Village is located on the northern part of the Tonle Sap Lake. This is transit point on the way to Prek Toal bird sanctuary.

One of the small unspoiled floating villages, nice and less touristy spot for those who like to feel beautiful atmosphere and the nature. It is not located far from the Siem Reap town, drive along road number 6, it takes approximately 30 minute (25km). After the drive took off the main street, the journey provides charming views of rice paddies, see farming activities in the rice fields before you reach at the boat pier. Mechrey is the floating community based on tourism, and transit point on the way to Prek Toal Bird sanctuary. So, Mechrey village offers such nice sightseeing along the channel where your sights are being attracted by interesting daily life of activities, floating houses, kids playing in the water, visit a mall floating souvenir shop, the crocodiles and active Buddhism pagoda.

The boat trip from Siemreap

Drive car to MeyChrey village (30 min). Drive through Mey Chrey village and freshwater swamps and bushes (2 hours). Can see the birds, local fishing and beautiful landscapes

Map and Geolocation



Road to Prek Toal (via Mechrey village)

Сиемреап

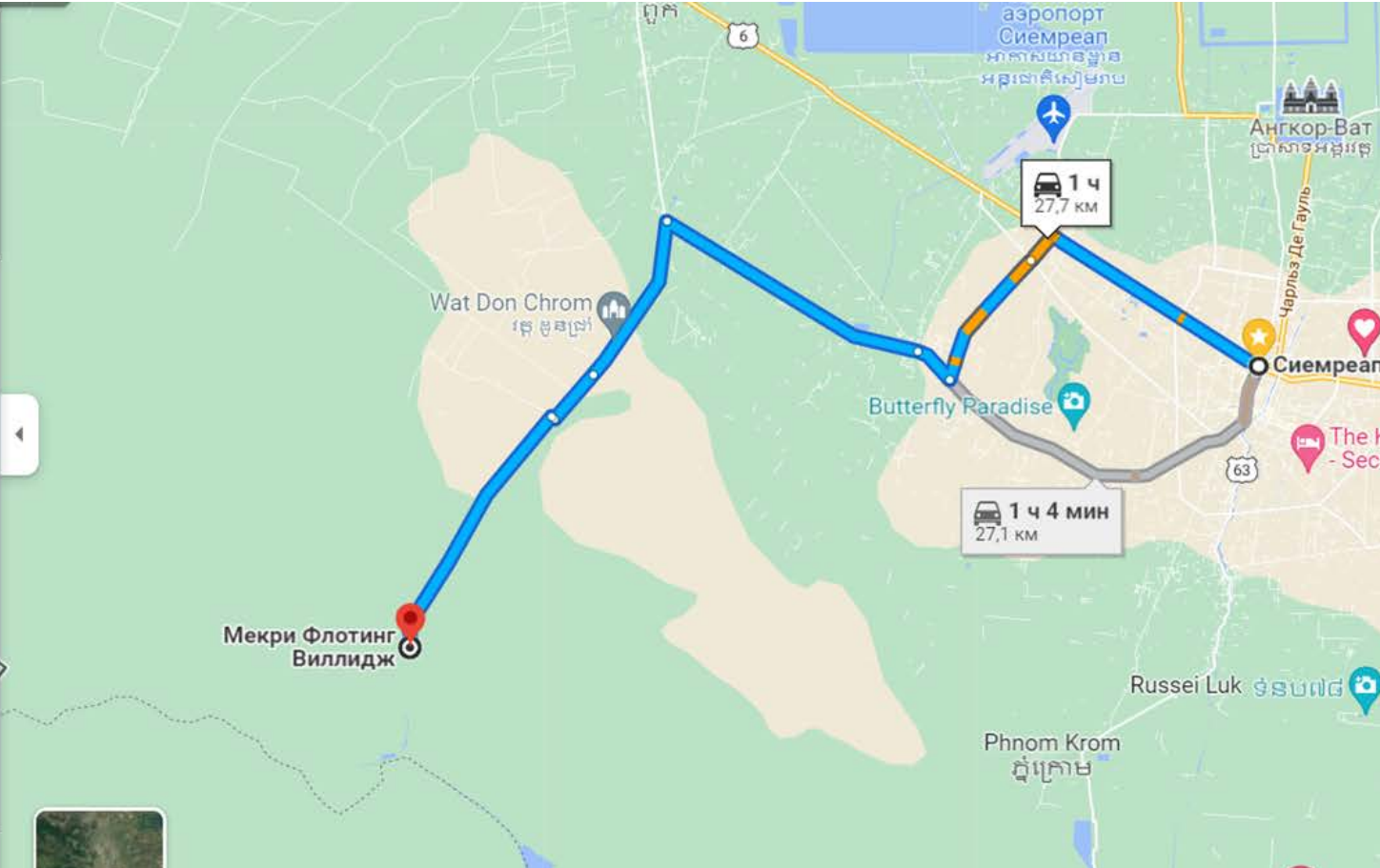
Мекри Флотинг Виллидж, 8M5M+2H5, I

Добавить пункт назначения

Отправление сейчас ▾ [Параметры](#)

[Отправить маршрут на телефон](#)

через ផ្លូវជាតិលេខ ៦/NR6	1 ч
Самый быстрый маршрут с учетом пробок	27,7 км
По шагам	
через Sivutha Blvd/NR63	1 ч 4 мин.
	27,1 км



Nature attractions scenery viewpoints and routes	Beautiful flooded bushes area around Mechrey commune
Cultural attractions	Small floating village Mechrey. Crocodile farm, Buddhist pagoda, school, Puok Silk farm.
Biodiversity of plants	Freshwater swamps. Flooded small forest.
Biodiversity of animals	https://www.birdguideasso.org/prek-toal-bird-checklist/
Biodiversity of fish and mollusks	https://www.fao.org/3/AB561E/ab561e07.htm
Potential outdoor activity	Birdwatching, eco-stay, boat adventures (kayaking, paddle boarding). Cycling Siemreap-Mechrey (22 km). Period – August – February.
Existing homestay\lodge\camping	No have
Existing restaurants	Don't have. Only Puok Silk farm on the way
House\land for rent, price, contacts	Average price of house rent (50mx30m) 100-150\$ for one month. 1000\$ per 1 year. Land is free behind the house. There are the opportunity to buy (rent) land at the border of wildlife sanctuary. Many of the owner are ready to provide the houses or land for rent. There is an opportunity to take land outside of Meychrey village. 090832483 the land for sell
Local commune tourist information and support	Mechrey local initiative CBET tourism commune office (4 boat drivers) Foreigner entrance ticket 2\$. Overnight 15\$
Contacts	Chief Van heng 012521584
Any previous tourism development projects	no
NGO, English speaking development projects	no
Transportation	Feb-Aug: small transportation boat 4-6 people Aug-Jan: medium and big transportation boat (10-30 people)
Road network, traveling distances;	1) Good asphalt road from Siemreap to Ang ta Mechrey pier (22 km)
Boat transportation local price	1. Meychrey village to Prek Toal village 60\$ per day (1-8 people). 95\$ day (9-19 people) (2 hours) 2. Mechrey village area 20\$(1-8), 35\$(9-19) 3. Mechrey village – Chong Kneas village 85\$(1-8), 115\$(9-19) 4. Mechrey village – Prey Chas commune 200\$(1-8), 310\$(9-19)
Opportunity for investors	1. One-day birdwatching tour 2. 2-days home-stay birdwatching tour (Nov-Jan) 3. 2 days eco-stay birdwatching tour (Nov-Jan) 4. Eco-stay lodge construction (min 40 guests) 5. Kayaking station rental SUP and kayaks 6. Silk viewing factory and shop 7. Restaurant



Indochinaviptour.com



Indochinaviptour.com



Indochinaviptour.com



Indochinaviptour.com

Mechrey Landscape



Indochinaviptour.com

Mechrey Ang Ta
Pier

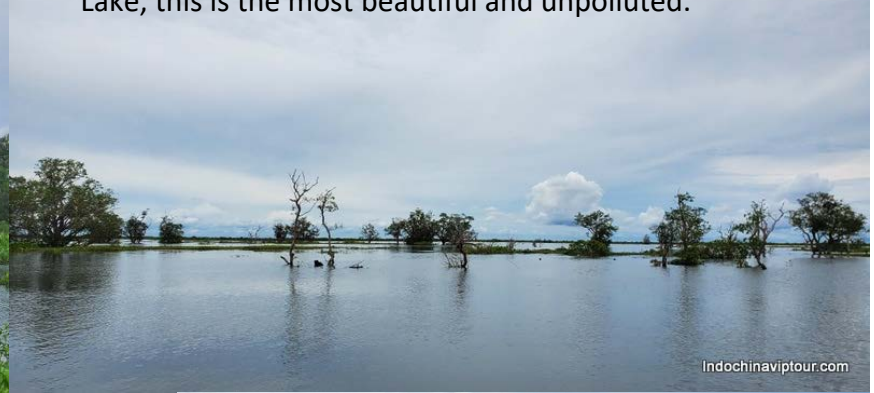


Indochinaviptour.com

Mechrey village

Name and description

MEAT KLA



2. Meat Kla floated village AREA

12.9 / 12° 54' 0.0" 104.1833333 / 104° 10' 59.9988"

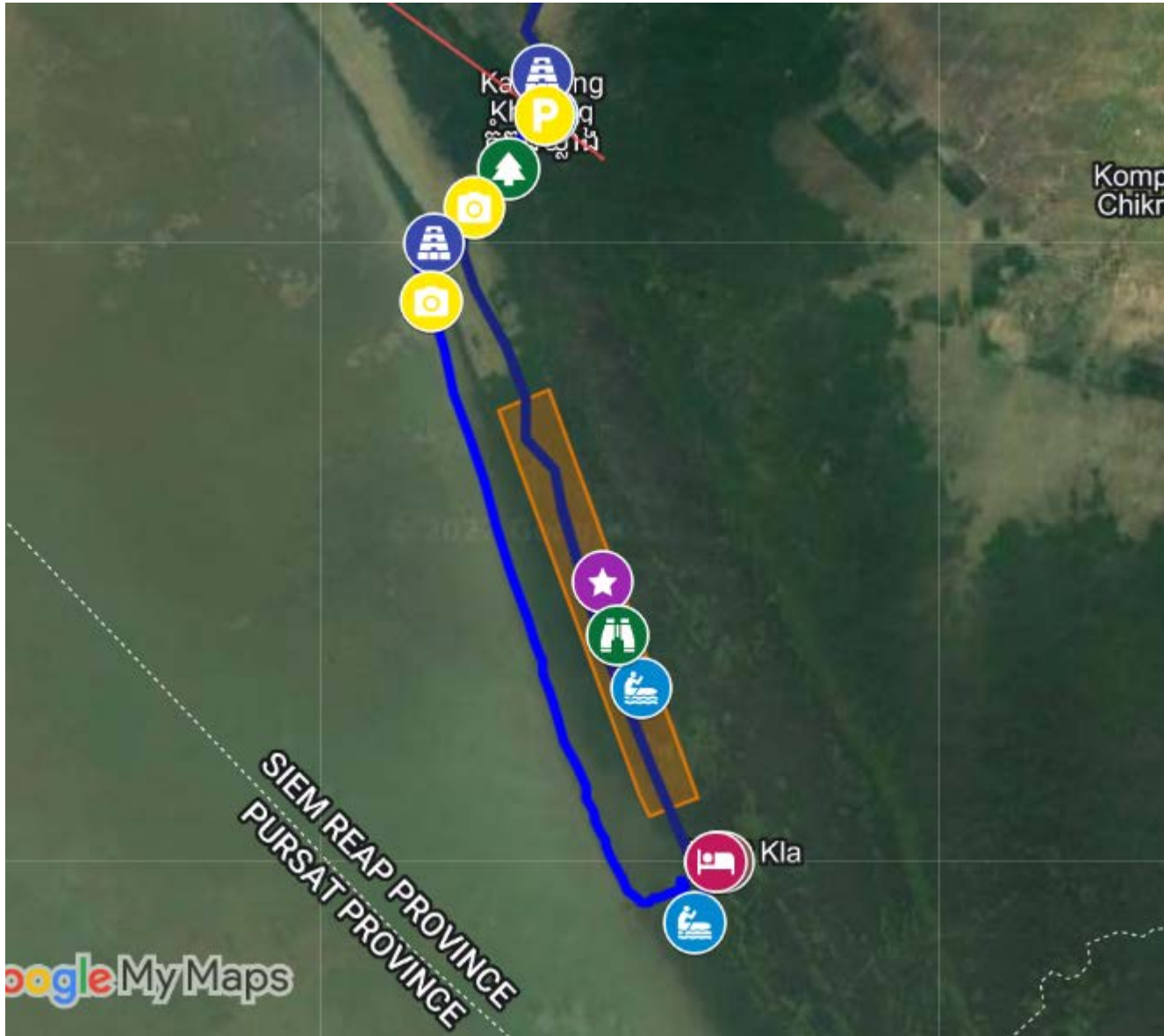
(population 800 people)

Flooded forest area from Kampong Kleang to Meat Kla
40km²

Meat Kla boat route from Kampong Kleang village is 2,5
hours

The met cla area is a stunningly beautiful landscape of trees
and water hyacinths. Of all the natural places of Tonle Sap
Lake, this is the most beautiful and unpolluted.

Map and Geolocation



Road to Meat Kla(via Kampong Kleang village)

Сиемреап

កំពង់ឃ្លាំង

Добавить пункт назначения

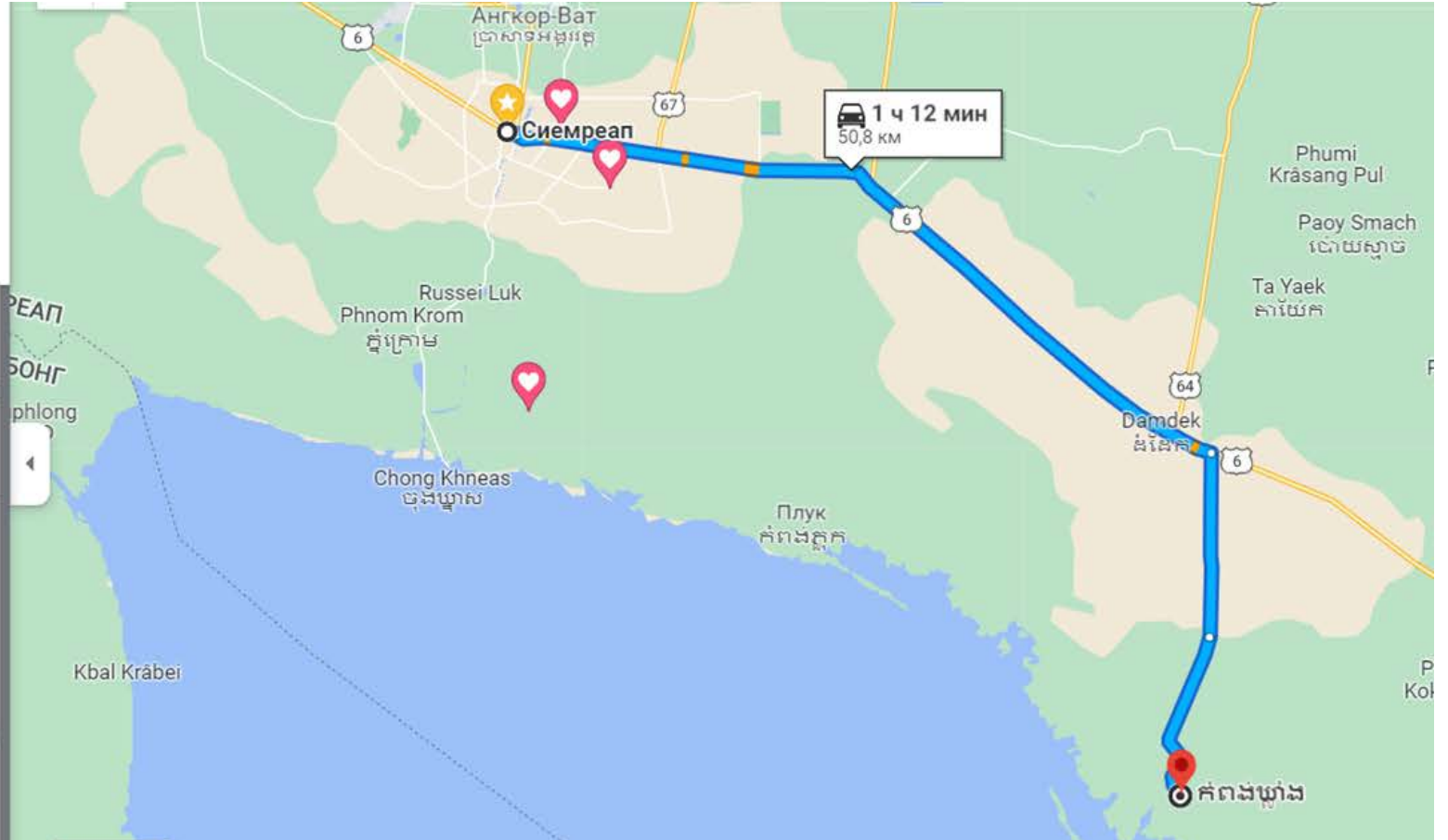
Отправление сейчас ▾ [Параметры](#)

[Отправить маршрут на телефон](#)

через ផ្លូវជាតិលេខ ៦/NR6 1 ч 12 мин.
Самый быстрый маршрут с учетом пробок 50,8 км

[По шагам](#)

កំពង់ឃ្លាំង: популярные места



Map details: The route starts at Siem Reap (marked with a star) and ends at Kampong Chhnang (marked with a red pin). The route passes through Damdek. A callout box shows a car icon, '1 ч 12 мин', and '50,8 км'. The map includes labels for 'Анкор-Ват', 'Сиемреап', 'Phnom Krom', 'Chong Khneas', 'Плук', 'Kbal Krabei', 'Damdek', 'Phumi Krasang Pul', 'Paoy Smach', and 'Ta Yaek'. Road numbers 6, 67, and 64 are visible.

Nature attractions scenery viewpoints and routes	Meat Kla area
Cultural attractions	Meat Kla floating village
Biodiversity of plants	Meat Kla flooded forest. Eichhornia crassipes (water hyacinth), mimosa pigra (giant mimosa)
Biodiversity of animals	https://www.birdguideasso.org/prek-toal-bird-checklist/ Fishing and leopard cat, python, freshwater turtle, squirrel
Biodiversity of fish and mollusks	https://www.fao.org/3/AB561E/ab561e07.htm
Potential outdoor activity	Birdwatching, eco-stay, boat adventures (kayaking, paddle boarding). Period – August – the end of January.
Existing homestay\lodge\camping	One small open house at Meat Kla village. 5 USD per person\night. You should bring your own hamok or tent and sleeping bag
Existing restaurants	Don't have. One shop
House\land for rent, price, contacts	Average price of house rent (50mx30m) 50\$ for one month. 500\$ per 1 year. There are the opportunity to buy (rent) land anywhere at the area. Many of the owner are ready to provide the houses or land for rent. 087248021 Srey Oum
Local commune tourist information and support	Kampong Kleang Tourism commune. Foreigner entrance ticket 2\$.
Contacts	Chief of CBET Sein 017519898 Chief of commune Papoo 077964311
Any previous tourism development projects	Don't have
Any NGO, English speaking development projects	Don't have
Transportation	Feb-Aug: Medium transportation boat 10-12 people Aug-Jan: Big transportation boat (30 people)
Road network, traveling distances;	1) Good asphalt road from Siemreap to Kampong Kleang pier (45 km)
Boat transportation local price	Foreigner entrance ticket 2\$. The small boat (10 people) to Meat Kla \$90. 3 hour of journey one way
Opportunity for investors	There are great opportunity to establish new freshwater flooded forest wildlife sanctuary Eco-stay lodge construction (min 40 guests) Kayaking station rental SUP and kayaks Wildlife rescue centre and zoo



Water hyacinth fields



Kayaks



Bird watching area



Kayaks







1. Kampong Kleang commune (Siemreap province)

13.10422, 104.12661 (population 21000 people)

The village Kompong Khleang is about 55km outside of Siem Reap city on the Tonle Sap and is the largest floating village in Siem Reap province and home to more than 20,000 residents. Kampong Khleang is made up of 6,000 Cambodians who live in three villages: Kampong Khleang, Chong Prolay, and an ethnic Vietnamese floating village. The economy is dominated by fishing and due to seasonal flooding all homes either buoyed or on stilts (hence the name "floating village" - they literally appear to float for part of the year). Water levels drop several meters beginning in December and a sand bank forms during the later part of the season (end of January/February - June). The journey around Kampong Kleang is 2,5-3 hours and include:

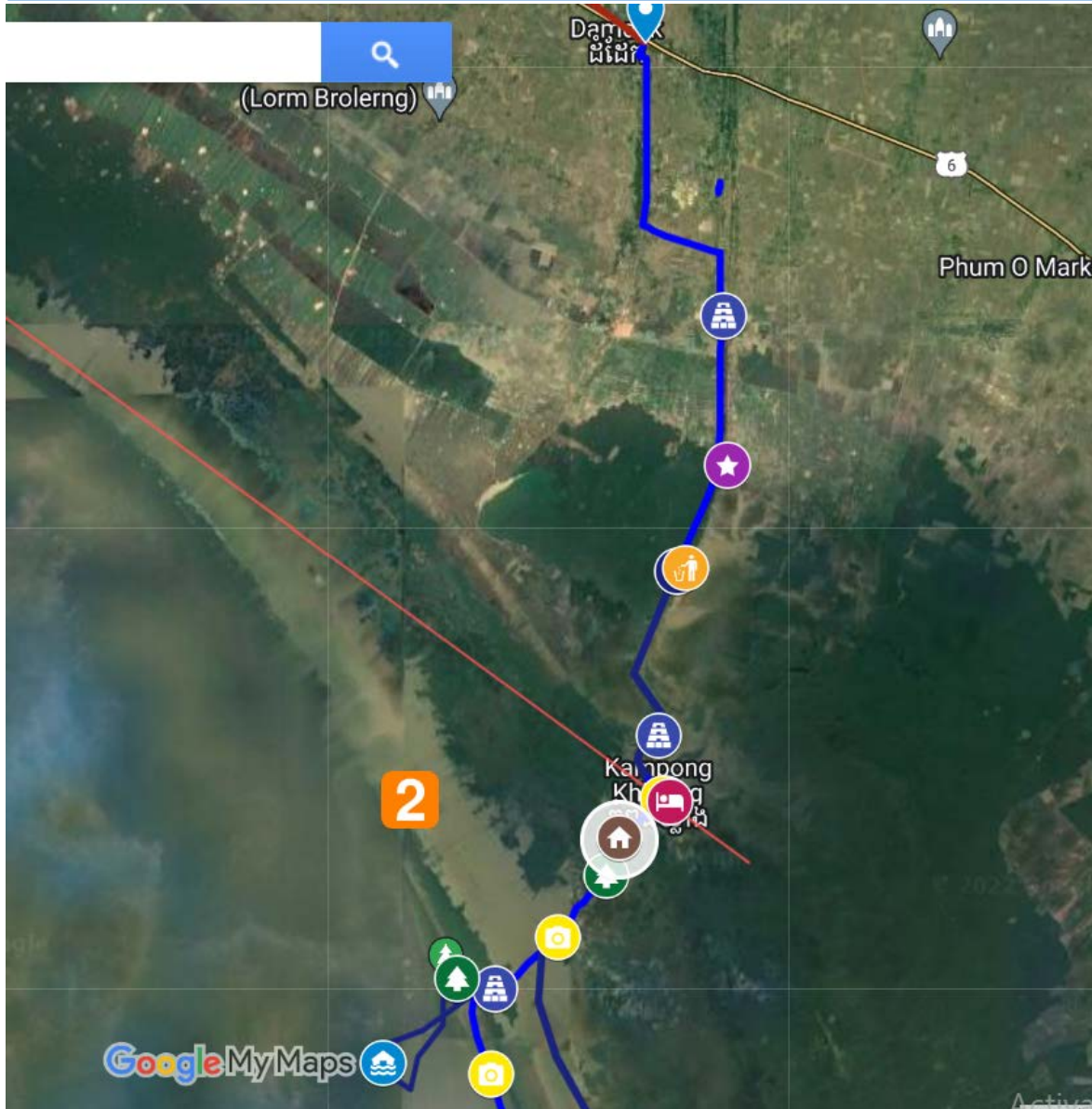
- Stilt houses area
- Floating houses area
- Fishing area
- Open water area

The village tour can also be combined with a visit to a large land-based crocodile farm, frog and shellfish farms, and kayaking in the flooded forests if the conditions are there to park a large ship and transfer to small boats.

Now it is not available.

Route from Siemreap: 1.30 min by car, 3 hours by boat

Map and Geolocation



Road to Kampong Kleang village

Сиемреап

កំពង់ឃ្លាំង

Добавить пункт назначения

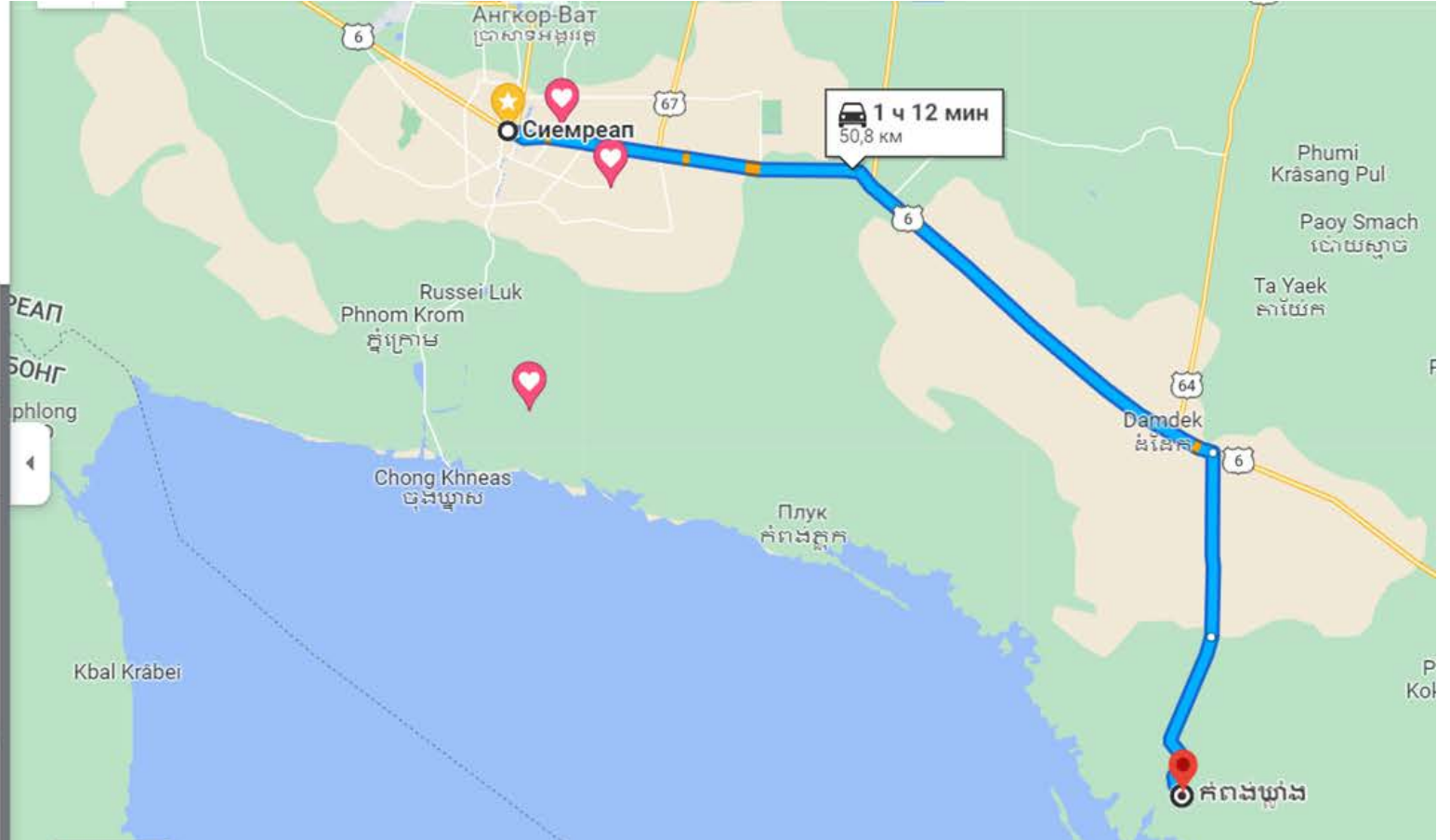
Отправление сейчас ▾ [Параметры](#)

[Отправить маршрут на телефон](#)

через ផ្លូវជាតិលេខ ៦/NR6 1 ч 12 мин.
Самый быстрый маршрут с учетом пробок 50,8 км

[По шагам](#)

កំពង់ឃ្លាំង: популярные места



Map details: The route starts at Siem Reap (Сиемреап) and ends at Kampong Kleang village (កំពង់ឃ្លាំង). The route passes through Damdek (ដំដេក). Key locations marked on the map include Angkor Wat (Ангкор-Ват), Phnom Krom (ភ្នំក្រោម), Chong Khneas (ចុងឃ្លាំង), and Pluk (Плук). Road numbers 6, 67, and 64 are visible. A callout box shows a travel time of 1 ч 12 мин and a distance of 50,8 км.

Nature attractions scenery viewpoints and routes	Open water area, small flooded forest
Cultural attractions	Authentic floating and stilt villages life. Crocodile, frogs, snakes farm. Commercial fishing
Biodiversity of plants	Small (2 hectares) flooded forest area
Biodiversity of animals	
Biodiversity of fish and mollusks	Many of small and big fish types at the fishing area. Can get fishing experience daytime 12-16pm
Potential outdoor activity	Fishing, kayaking, boat riding, eco-stay
Existing homestay\lodge\camping	There are two homestay places 9\$ per pax, but not equipped after covid.
Existing restaurants	Don't have.
House\land for rent, price, contacts	Have land for rent and for sale and long-time operating. See at the map 087248021, 017519898
Local commune tourist information and support	Have well done local initiative CBET office and security. 4 toilets. No corruption. 2\$ per foreigner ticket
Contacts	Sein 017519898 is CBET manager
Any previous tourism development projects	https://www.komponghleang.org/tonle-sap Kompong Khleang Floating Village Tours is a not-for-profit community based tour benefiting Bridge of Life School, a NGO providing free educational related programming in Siem Reap and Kompong Thom Provinces.
Any NGO, English speaking development projects	https://www.komponghleang.org/tonle-sap Kompong Khleang Floating Village Tours is a not-for-profit community based tour benefiting Bridge of Life School, a NGO providing free educational related programming in Siem Reap and Kompong Thom Provinces.
Transportation	Feb-Aug: Medium transportation boat 10-12 people Aug-Jan: Big transportation boat (30 people)
Road network, traveling distances;	55 km from Siemreap, good asphalt road.
Boat transportation local price	Kampong Kleang area 1-9 22\$, 10-17 39\$, 18-27 45\$, 28-36 50\$, 37-46 60\$ 3 hours tour Kampong Kleang-Kampong Pluk 1-9 75\$, 10-12 100\$, 13-16 120\$ 2,5 hours Kampong Kleang – Chong Kneas 1-9 110\$, 10-16 160\$ 3 hours Kampong Kleang – Meat Kla 1-9 90\$ 6 hours Kampong Kleang – Kampong Luong 1-9 170\$, 10-16 310\$ 6 hours
Opportunity for investors	Night eco-stay fishing cruise boat Eco-lodge construction Restaurant with viewpoint construction with kayak rental service Kampong Kleang is good reliable transportation hub to explore Tonlesap area



Sunset at Kampong Kleang



Open water area



Kampong Kleang



Crocodile farm



Open water area



Kampong Kleang



1. Kampong Pluk village (Siemreap province) (population over 6000 people)

The village Kompong Pluk is most spectacular and comfortable for tour organizing from Siemreap.

Kampong Phluk is located 37 km southwest of downtown Siem Reap. Much of the way is on an unpaved dirt road. Kampong Phluk, meaning “Harbor of the Tusks”, includes three primarily Khmer villages which are home to 6000 inhabitants. Flooded mangrove forest surrounds the area and is home to a variety of wildlife including crab-eating macaques, squirrels, otters, palm civetta, and many birds. It is a relatively small village providing deepest insight into the village lifestyle of the Tonle Sap Lake and extraordinarily rich and diverse forested floodplain eco-system.

The houses of Kompong Phluk are built on top of wooden poles and stilts between six and eight meters high and tower over the boats moored along the river, which snakes through the village before heading out into the Tonle Sap lake. During the dry season when the lake is low, the buildings in the villages seem to soar atop their 6-meter stilts exposed by the lack of water. At this time of year many of the villagers move out onto the lake and build temporary houses. In the wet season when water level rises, the villagers move back to their permanent houses on the floodplain, the stilts now hidden under the water.

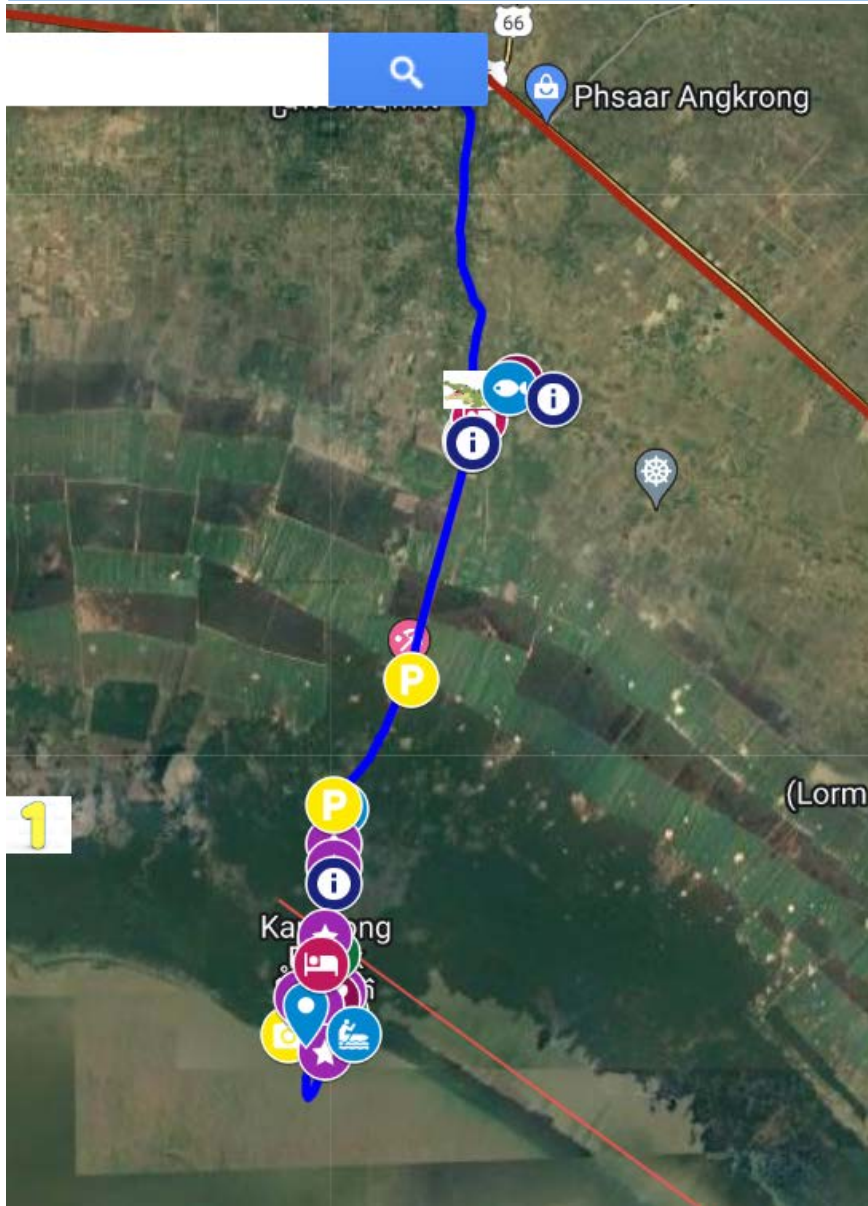
The journey around Kampong Pluk is 2,5-3 hours and include:

- Stilt houses area
- Floating houses area
- Fishing area
- Flooded forest area
- Open water area
- Sunset viewpoint area

The village tour can also be combined with a visit to a large water-based crocodile farm and restaurant, frog and shellfish farms, and kayaking in the flooded forests if the conditions are there to park a large ship and transfer to small boats.

Route from Siemreap: 1.30 min by car, 3 hours by boat

Map and Geolocation



Сиемреап

Kampong Phluk Floating Village, 6X5F+J

Добавить пункт назначения

Отправление сейчас ▾

Параметры

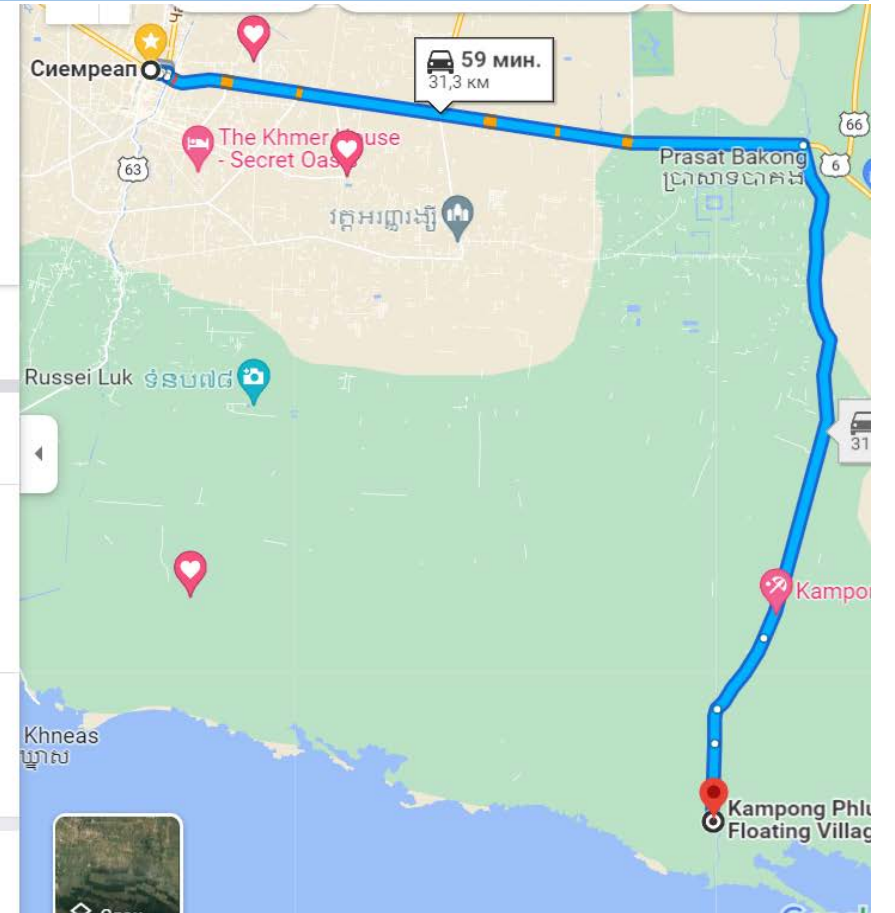
Отправить маршрут на телефон

через ផ្លូវជាតិលេខ ៦/NR6 59 мин.
Лучший маршрут с учетом пробок 31,3 км

По шагам

через ផ្លូវជាតិលេខ ៦/NR6 и 812 58 мин.
31,5 км

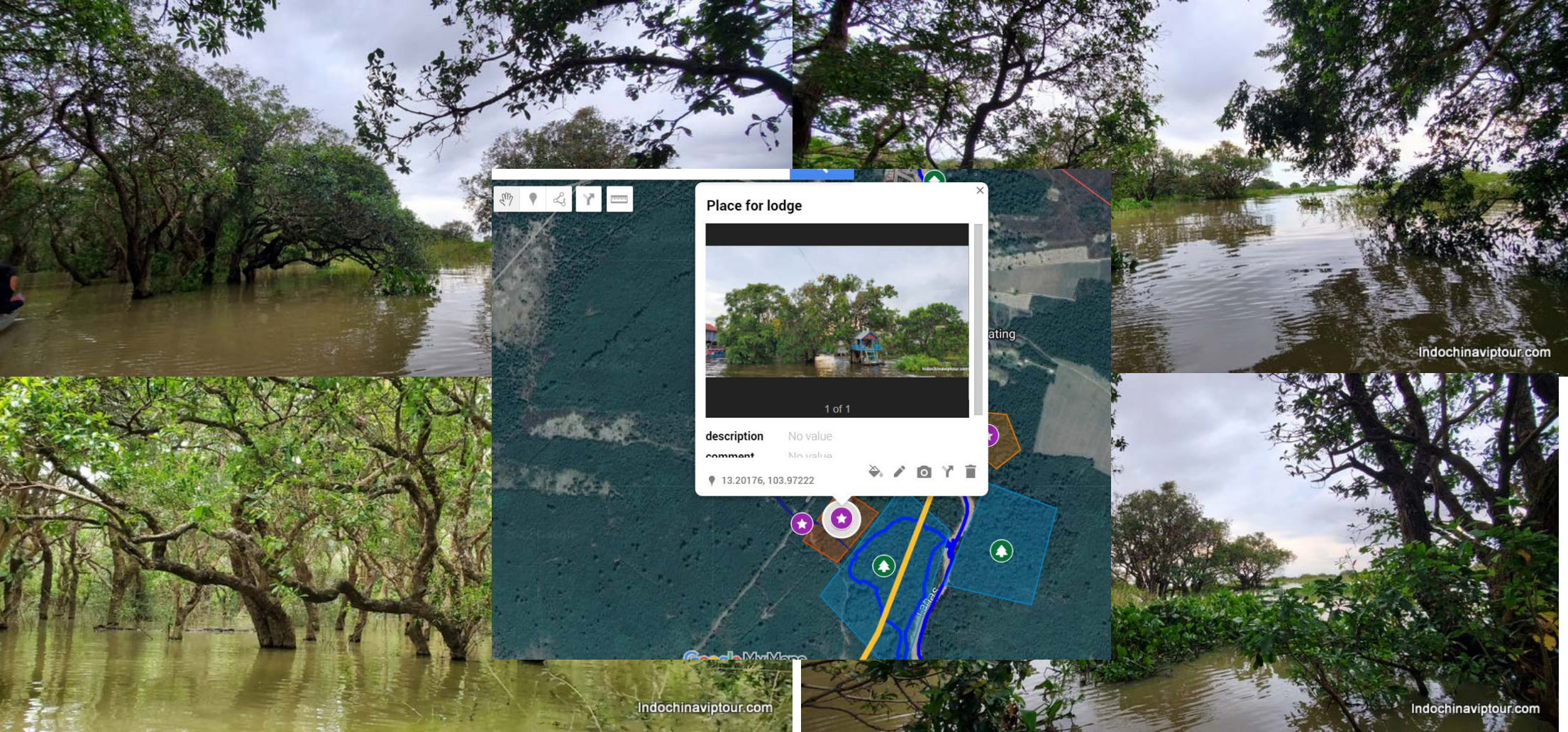
Kampong Phluk Floating Village: популярные



Nature attractions scenery viewpoints and routes	Open water area, flooded forest, the awe-inspiring sunset when the sun peaks below the clouds as the sky changes from a bright blue to a luminescent orange.
Cultural attractions	The local community is busy fishing, especially shrimp harvesting. An out-of-this-world experience is taking a boat tour to witness the daily village life as well as take a look into the domestic animals like pigs, cats, civettas, storks and cranes living inside paddle boats floating around.
Biodiversity of plants	8 hectares of flooded forest area
Biodiversity of animals	crab-eating macaques, squirrels, otters, palm civetta, and many birds
Biodiversity of fish and mollusks	Many of small and big fish types, crabs, shrimps and mollusks at the fishing area
Potential outdoor activity	Fishing, kayaking, boat riding, eco-stay, night flooded forest eco-stay trip
Existing homestay\lodge\camping	There are one homestay place 15\$ per pax.
Existing restaurants	4 floating restaurants with sunset viewpoints (60 people each).
House\land for rent, price, contacts	Have land for rent and for sale and long-time operating. Have restaurants for sell. See at the map 092773498 Serej, 012415535
Local commune tourist information and support	Have well done local initiative CBET office and security. 4 toilets. No corruption. 2\$ per foreigner ticket. 15\$ overnight.
Contacts	CBET manager 092734869, 012569044 Mey Phum Sok Plang 0885998889
Any previous tourism development projects	Kampong Pluk local initiative CBET, Korean restaurant
Any NGO, English speaking development projects	https://www.hurredo.org/latest-news.php?page=5 https://sgp.undp.org/spacial-itemid-projects-landing-page/spacial-itemid-project-search-results/spacial-itemid-project-detailpage.html?view=projectdetail&id=19913
Transportation	Feb-Aug: Medium transportation boat 10-12 people Aug-Jan: Big transportation boat (30 people)
Road network, traveling distances;	15 km from Siemreap, good asphalt road, 16 km red dirt road
Boat transportation local price	Kampong Pluk area 1-9 22\$, 10-17 36\$, 18-27 45\$, 28-36 50\$, 37-46 60\$ 3 hours tour with sunset viewing
Opportunity for investors	Night eco-stay fishing cruise boat Eco-lodge construction Restaurant with viewpoint construction Big hotel



The land for rent and eco-lodge construction



Restaurant
for sell
30000\$



Flooded forest small boat tour



Sunset





Name and description



CHONG KNEAS VILLAGE

1. Chong Kneas commune (Siemreap province)

13.22808, 103.82372 (population 13000 people)

Chong Kneas is very scenic in the warm light of late afternoon and can be combined with a sunset from the nearby hilltop temple of Phnom Krom. An amazement sight of high wooden houses arrangement along the side of the red road, with more than 6000 residents who live there since the Khmer Rouge period and a majority, Cambodian. During the day, some of them drive a boat for tourists, later on, they will go fishing. The way lives for the people there don't get well providing public service much, but they satisfy to live by a significant amount of fishes that keep them living there for years. The boat trip slowly cruises passing Vietnamese floating village with catholic church, **floating school, floating houses** which animated by some fishing activities.

- Stilt houses area and Phnom Krom hill, land-based
- Floating houses area
- Fishing area
- Largest flooded forest area
- Open water area with sunset viewpoints

The village tour can also be combined with a visit to a large crocodile farms, Vietnamese illegal frog, cobra and shellfish farms, and kayaking in the flooded forests if the conditions are there to park a large ship and transfer to small boats.

Now it is not available.

Route from Siemreap: 30 min by car, 20 min by boat

2 hours is excursion time.

Chong Kneas is the major boat-landing site connecting Siem Reap with the Tonle Sap lake. Fish, cargo, fuel, domestic boat passengers, and tourists transit through Chong Kneas. When the lake is at its highest level, all transshipment activities and most of the Chong Kneas population are concentrated around Phnom Kraom, an isolated rocky outcrop rising about 140 m above the otherwise flat terrain of the seasonally flooded land bordering the Tonle Sap lake. The existing landing facilities are rudimentary and, depending on the level of water in the lake, are located at the edge of the dry season lake boundary or at various points along the existing road embankment leading south from Phnom Kraom toward the lake. The landing site moves over a distance of about 6 kilometers during the course of the year.

Chong Kneas consists of eight villages with a total population of about 10,415, of whom 3,878 (29%) are of Vietnamese ethnicity. The residents live in house boats or makeshift houses made of natural materials from the surrounding forest.

A few live in more substantial fixed houses of varying standards. Depending on the time of year, house boats are located either on the lake or adjacent to the embankment running south from Phnom Kraom. The entire community, apart from those in the fixed houses, moves throughout the course of the year in response to the changes in water level of the lake. Although the community contains a range of income groups, most members are poor and live in unhealthy surroundings with limited access to education, health services, and other facilities such as drinking water and sanitation. The community is ethnically diverse, comprising Khmer, Cham, and Vietnamese.

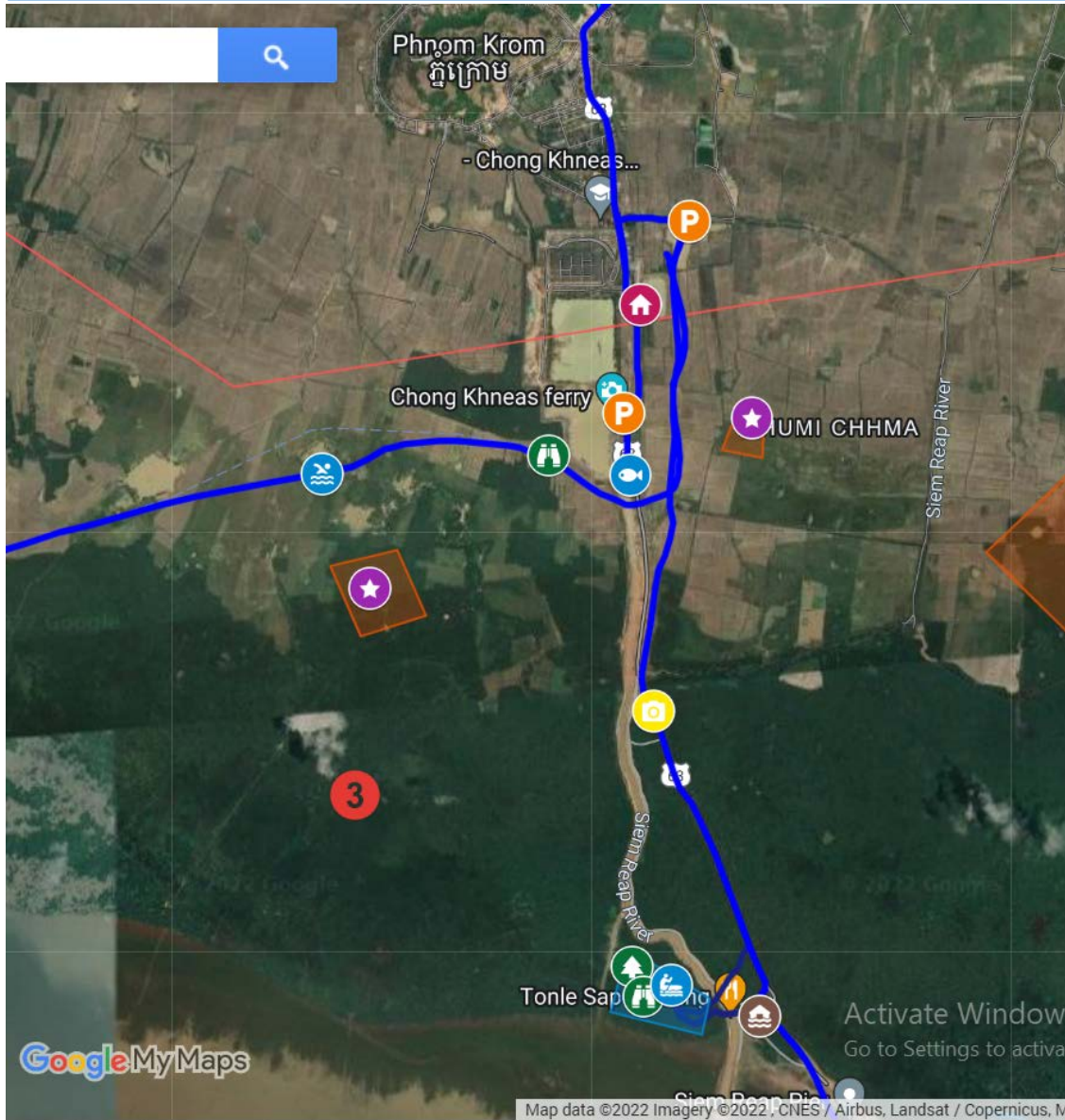
The well being of the Chong Kneas population (whose livelihoods are related either to fishing or the extractive use of other natural resources of the Tonle Sap lake) depends on sustainable management of natural resources. In addition, new livelihood opportunities are needed to reduce poverty. As a first step, the boat landing facilities need to be improved to overcome many of the negative impacts and inefficiencies of current arrangements, enable the dismantling of various exploitative practices, and create new employment opportunities in tourism.

The creation of permanent facilities at Chong Kneas in place of the makeshift landing arrangements is complicated by the seasonal variation in water level in the lake and absence of any well defined lake boundary where an anchorage and unloading/loading facilities could be installed. Any permanent structure needs to accommodate a water level variation of about 10 meters.

<https://www.researchgate.net/publication/254930162> The Floating Dwellings of Chong Kneas Cambodia



Map and Geolocation



Сиемреап

Chong Khneas

Добавить пункт назначения

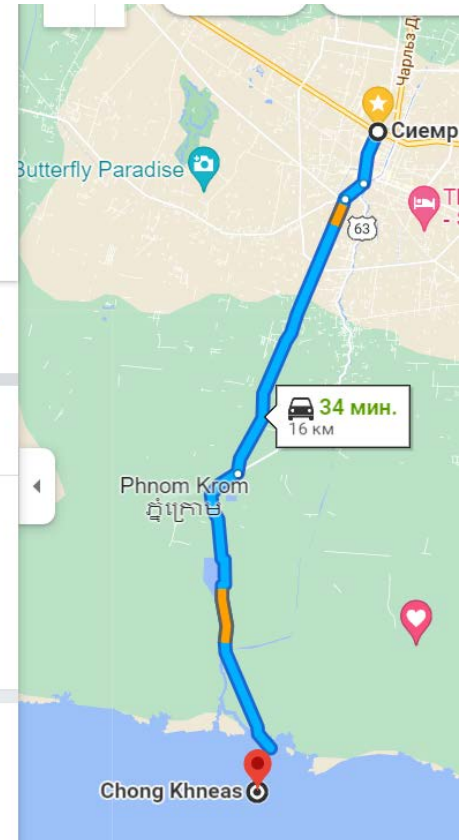
Отправление сейчас ▾ [Параметры](#)

[Отправить маршрут на телефон](#)

через NR63 **34 мин.**
Самый быстрый маршрут с учетом пробок 16,0 км

[По шагам](#)

Chong Khneas: популярные места



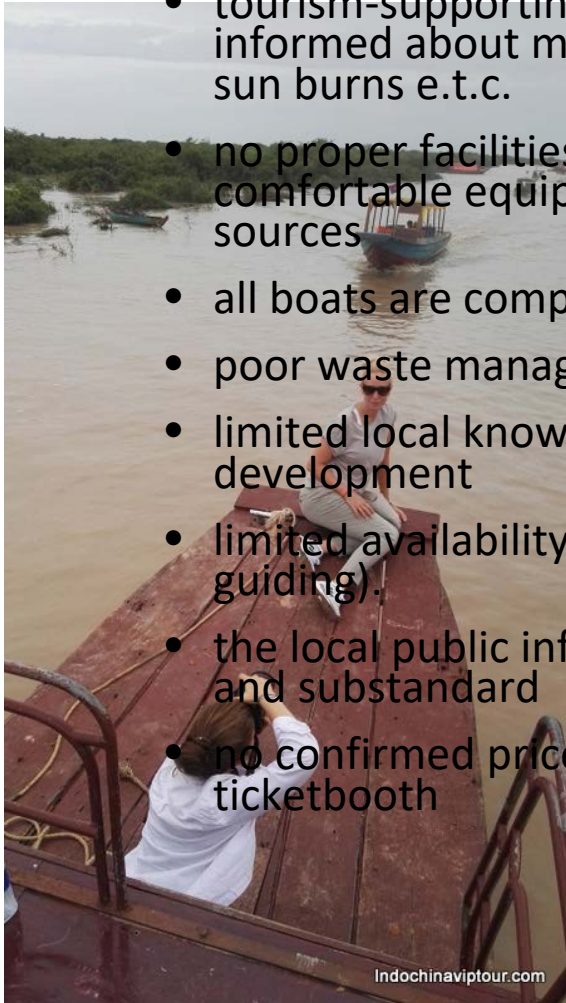
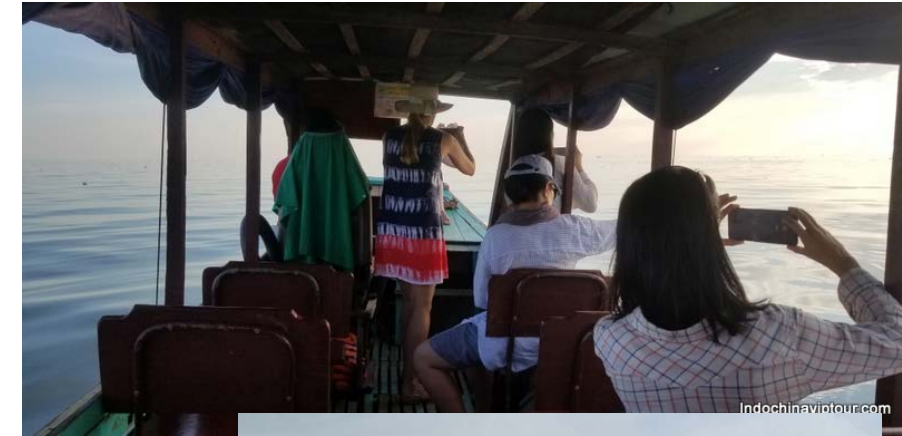
Nature attractions scenery viewpoints and routes	Open water area, flooded forest
Cultural attractions	Authentic floating and stilt villages life. Crocodile, frogs, snakes farm.
Biodiversity of plants	8 hectares of flooded forest area
Biodiversity of animals	crab-eating macaques, squirrels, otters, palm civetta
Biodiversity of fish and mollusks	Many of small and big fish types at the fishing area. Can get fishing experience daytime 12-16pm
Potential outdoor activity	Fishing, kayaking, boat riding
Existing homestay\lodge\camping	Have land-based eco-stay bungalow with fishing ponds and lotus fields. Homestay at the floating village is available by demand.
Existing restaurants	There are 2 floating restaurants at the village with crocodile farms.
House\land for rent, price, contacts	Have land for rent and for sale and long-time operating. See at the map 085771032 Borann
Local commune tourist information and support	Have Ministry of tourism office and security. 8 toilets. 2\$ per foreigner ticket
Contacts	
Any previous tourism development projects	Korean company for the kayak rental service (closed)
Transportation	Feb-Aug: Medium transportation boat 10-12 people Aug-Jan: Big transportation boat (30 people)
Road network, traveling distances;	14 km from Siemreap, good asphalt road.
Boat transportation local price	<p>Chong Kneas area 1-9 22\$, 10-17 39\$, 18-27 45\$, 28-36 50\$, 37-46 60\$ 3 hours tour</p> <p>Chong Kneas -Kampong Pluk 1-9 75\$, 10-12 100\$, 13-16 120\$ 2,5 hours</p> <p>Chong Kneas - Kampong Kleang 1-9 110\$, 10-16 160\$ 3 hours</p> <p>Chong Kneas – Prek Toal 1-9 120\$ 6 hours</p> <p>Chong Kneas – Kampong Luong 1-9 170\$, 10-16 310\$ 6 hours</p> <p>Chong Kneas – Phnom Penh 1-9 240\$</p> <p>Tara Boat offers daily tours at \$27 for a half-day trip (or \$33 for a sunset trip). This includes food and drink on the Tara Boat, unlimited on the sunset tour hence the higher price. Beyond Unique Escapes also offer tours that seem to be well managed and popular with guests for \$20.</p>
Opportunity for investors	<p>Night eco-stay fishing cruise boat</p> <p>Eco-lodge construction</p> <p>Restaurant with viewpoint construction with kayak rental service</p> <p>Kayak rental at the flooded forest area</p>

Strengths

- Unique nature landscapes and boat riding experience
- Extraordinarily rich and diverse eco-system include forested floodplain
- Well-connected nature and authentic culture attractions
- Geographical proximity to Siemreap City
- Good potential for local community to provide tourism service: homestay, restaurants, boat rental, kayak rental and guiding, handicraft shops
- There is a many opportunities for local and private investments (tented camps and lodges, restaurants and viewpoints, transportation boats, kayak and paddle-boards, crocodile, frogs and snakes farms)
- Reasonable prices after COVID

Weaknesses

- tourism-supporting infrastructure is rather basic. Tourists are not informed about mud, dirty water, bad smells, bad noise of boat engine, sun burns e.t.c.
- no proper facilities on the way and at the places, like: toilets, comfortable equipped viewpoints, restaurants and shops, clean water sources
- all boats are completely uncomfortable and unsafe. NEED HUTS
- poor waste management practices
- limited local knowledge and understanding about ecotourism development
- limited availability of labor force with hospitality skills (especially guiding).
- the local public infrastructure investments are very poor, short-lived and substandard
- no confirmed prices and rates for boat riding. Corruption at the official ticketbooth



Evaluation on how nearby people would accept a tourism development

After extensive consultation with the local leaders at Prek Toal, Kampong Kleang, Kampong Pluk villages, I explained that if managers understand how residents perceive the impacts of tourism, it follows that tourism development in a community can be planned in a way that improves the overall quality of life for residents. Resident support is essential for tourism to thrive in a community. Many insights can now be gained about resident attitudes toward and subsequent support for tourism. From a positive perspective, tourism increases demands on local arts , improves cultural identity village pride and cohesion of villagers, It increases locals' knowledge about their culture Tourism also is believed to bring opportunities for cultural exchange and preservation of local traditions and culture , improves community image and increases quality of life.

Through developing of ecotourism, and professional educational programs will able to make the the local people understand the importance of preserving the environment, and some ex-poachers can now working as boatmen, with yet others will be employed to teach visitors about fish farming, production of water hyacinth handicrafts and traditional fishing techniques etc. The positive socio-economic impact of providing local homestay accommodation, campings, lodges, food and restaurant services and various kinds of boat tours and excursions, include kayaking, paddle boarding, big sleeping boats for cruise travelling to faraway hidden places and villages directly benefits disadvantaged families and helps to support economic development in the area.